

Acta Crystallographica Section E

Structure Reports

Online

ISSN 1600-5368

10-Hydroxybenzo[*h*]quinolin-1-ium tetrachlorido(pyridine-2-carboxylato- κ^2N,O)stannate(IV) methanol monosolvate

 Ezzatollah Najafi,^a Mostafa M. Amini^a and Seik Weng Ng^{b,c,*}

^aDepartment of Chemistry, General Campus, Shahid Beheshti University, Tehran 1983963113, Iran, ^bDepartment of Chemistry, University of Malaya, 50603 Kuala Lumpur, Malaysia, and ^cChemistry Department, Faculty of Science, King Abdulaziz University, PO Box 80203 Jeddah, Saudi Arabia

Correspondence e-mail: seikweng@um.edu.my

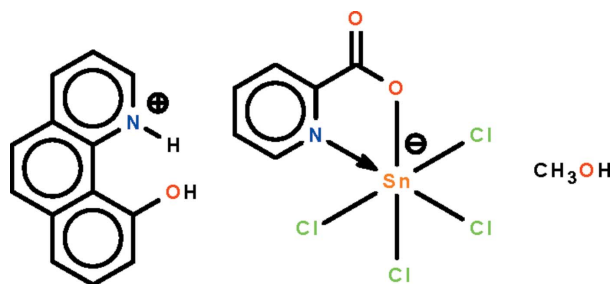
Received 1 May 2012; accepted 2 May 2012

Key indicators: single-crystal X-ray study; $T = 100$ K; mean $\sigma(\text{C}-\text{C}) = 0.004$ Å; R factor = 0.028; wR factor = 0.065; data-to-parameter ratio = 18.2.

The reaction of 4-(dimethylamino)pyridine, picolinic acid and stannic chloride yields the title monosolvated salt, $(\text{C}_{13}\text{H}_{10}\text{NO})[\text{SnCl}_4(\text{C}_6\text{H}_4\text{NO}_2)] \cdot \text{CH}_3\text{OH}$. The Sn^{IV} atom is N,O -chelated by the picolinate ion in a *cis*- SnNOCl_4 octahedral geometry. The cation is linked to the methanol solvent molecule by an $\text{O}-\text{H} \cdots \text{O}$ hydrogen bond; the solvent molecule itself is a hydrogen-bond donor to the uncoordinating carboxylate O atom of the anion. The cations and anions are linked by weak $\text{N}-\text{H} \cdots \text{Cl}$ interactions, forming a chain running along the b axis.

Related literature

For a tetrachlorido(pyridine-2-carboxylato)stannate(IV), see: Najafi *et al.* (2012).



Experimental

Crystal data

$(\text{C}_{13}\text{H}_{10}\text{NO})[\text{SnCl}_4(\text{C}_6\text{H}_4\text{NO}_2)] \cdot \text{CH}_3\text{O}$
 $M_r = 610.85$
 Monoclinic, $C2/c$
 $a = 31.5065$ (11) Å
 $b = 8.0802$ (2) Å
 $c = 20.0948$ (9) Å

$\beta = 115.722$ (5)°
 $V = 4608.8$ (3) Å³
 $Z = 8$
 Mo $K\alpha$ radiation
 $\mu = 1.60$ mm⁻¹
 $T = 100$ K
 $0.30 \times 0.20 \times 0.10$ mm

Data collection

Agilent SuperNova Dual diffractometer with an Atlas detector
 Absorption correction: multi-scan (*CrysAlis PRO*; Agilent, 2012)
 $T_{\min} = 0.645$, $T_{\max} = 0.856$

15316 measured reflections
 5326 independent reflections
 4445 reflections with $I > 2\sigma(I)$
 $R_{\text{int}} = 0.033$

Refinement

$R[F^2 > 2\sigma(F^2)] = 0.028$
 $wR(F^2) = 0.065$
 $S = 1.02$
 5326 reflections
 293 parameters
 3 restraints

H atoms treated by a mixture of independent and constrained refinement
 $\Delta\rho_{\max} = 0.51$ e Å⁻³
 $\Delta\rho_{\min} = -0.44$ e Å⁻³

Table 1

Hydrogen-bond geometry (Å, °).

$D-\text{H} \cdots A$	$D-\text{H}$	$\text{H} \cdots A$	$D \cdots A$	$D-\text{H} \cdots A$
$\text{O3}-\text{H3} \cdots \text{O4}$	0.84 (1)	1.73 (1)	2.554 (2)	170 (3)
$\text{O4}-\text{H4} \cdots \text{O2}$	0.83 (1)	1.87 (1)	2.698 (3)	174 (3)
$\text{N2}-\text{H2} \cdots \text{Cl4}^i$	0.87 (1)	2.58 (2)	3.255 (2)	135 (2)

 Symmetry code: (i) $-x + \frac{1}{2}, y - \frac{1}{2}, -z + \frac{3}{2}$.

Data collection: *CrysAlis PRO* (Agilent, 2012); cell refinement: *CrysAlis PRO*; data reduction: *CrysAlis PRO*; program(s) used to solve structure: *SHELXS97* (Sheldrick, 2008); program(s) used to refine structure: *SHELXL97* (Sheldrick, 2008); molecular graphics: *X-SEED* (Barbour, 2001); software used to prepare material for publication: *pubCIF* (Westrip, 2010).

We thank Shahid Beheshti University and the Ministry of Higher Education of Malaysia (grant No. UM.C/HIR/MOHE/SC/12) for supporting this study.

Supplementary data and figures for this paper are available from the IUCr electronic archives (Reference: HG5222).

References

- Agilent (2012). *CrysAlis PRO*. Agilent Technologies, Yarnton, England.
 Barbour, L. J. (2001). *J. Supramol. Chem.* **1**, 189–191.
 Najafi, E., Amini, M. M. & Ng, S. W. (2012). *Acta Cryst.* **E68**, m744.
 Sheldrick, G. M. (2008). *Acta Cryst.* **A64**, 112–122.
 Westrip, S. P. (2010). *J. Appl. Cryst.* **43**, 920–925.

supplementary materials

Acta Cryst. (2012). E68, m743 [doi:10.1107/S1600536812019605]

10-Hydroxybenzo[*h*]quinolin-1-ium tetrachlorido(pyridine-2-carboxylato- κ^2N,O)stannate(IV) methanol monosolvate

Ezzatollah Najafi, Mostafa M. Amini and Seik Weng Ng

Comment

A previous study reported 4-(dimethylamino)pyridinium tetrachlorido(pyridine-2-carboxylato)stannate, which was synthesized by the reaction of 4-(dimethylamino)pyridine, picolinic acid and stannic chloride in methanol (Najafi *et al.*, 2012). The reaction with 10-hydroxybenzo[*h*]quinoline in place of 4-(dimethylamino)pyridine yielded the analogous salt, (C₁₃H₁₀NO)[SnCl₄(C₆H₄NO₂)] as a methanol monosolvate (Scheme I). The Sn^{IV} atom is *N,O*-chelated by the picolinate ion in a *cis*-SnNOCl₄ octahedral geometry. The cation is linked to the methanol molecule by an O–H···O hydrogen bond; the solvent molecule itself is hydrogen-bond donor to the double-bond carboxyl O atom of the anion (Table 1).

Experimental

Stannic chloride pentahydrate (0.35 g, 1 mmol), picolinic acid (0.12 g, 1 mmol) and 10-hydroxybenzo[*h*]quinoline (0.20 g, 1 mmol) were loaded into a convection tube; the tube was filled with dry methanol and kept at 333 K. Yellow crystals were collected from the side arm after several days.

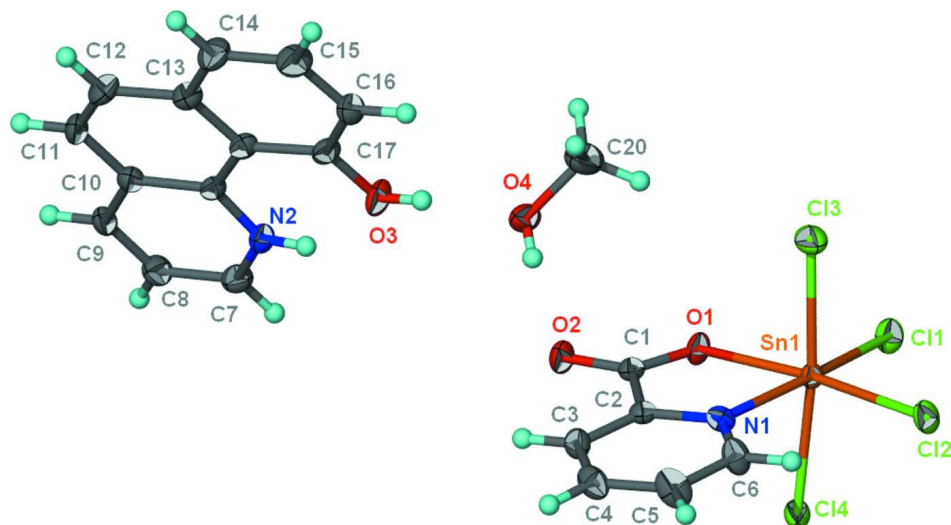
Refinement

Carbon-bound H-atoms were placed in calculated positions [C–H 0.95 to 0.98 Å, $U_{\text{iso}}(\text{H})$ 1.2 to 1.5 $U_{\text{eq}}(\text{C})$] and were included in the refinement in the riding model approximation.

The hydroxy and ammonium H-atoms were located in a difference Fourier map, and were refined with distance restraints of O–H 0.84±0.01 and N–H 0.88±0.01 Å; their temperature factors were refined.

Computing details

Data collection: *CrysAlis PRO* (Agilent, 2012); cell refinement: *CrysAlis PRO* (Agilent, 2012); data reduction: *CrysAlis PRO* (Agilent, 2012); program(s) used to solve structure: *SHELXS97* (Sheldrick, 2008); program(s) used to refine structure: *SHELXL97* (Sheldrick, 2008); molecular graphics: *X-SEED* (Barbour, 2001); software used to prepare material for publication: *publCIF* (Westrip, 2010).


Figure 1

Thermal ellipsoid plot (Barbour, 2001) of $(C_{13}H_{10}NO)[SnCl_4(C_6H_4NO_2)] \cdot CH_3OH$ at the 70% probability level; hydrogen atoms are drawn as spheres of arbitrary radius.

10-Hydroxybenzo[*h*]quinolin-1-ium tetrachlorido(pyridine-2-carboxylato- κ^2N,O)stannate(IV) methanol monosolvate

Crystal data

$(C_{13}H_{10}NO)[SnCl_4(C_6H_4NO_2)] \cdot CH_4O$

$M_r = 610.85$

Monoclinic, $C2/c$

Hall symbol: $-C\ 2yc$

$a = 31.5065\ (11)\ \text{\AA}$

$b = 8.0802\ (2)\ \text{\AA}$

$c = 20.0948\ (9)\ \text{\AA}$

$\beta = 115.722\ (5)^\circ$

$V = 4608.8\ (3)\ \text{\AA}^3$

$Z = 8$

$F(000) = 2416$

$D_x = 1.761\ \text{Mg m}^{-3}$

Mo $K\alpha$ radiation, $\lambda = 0.71073\ \text{\AA}$

Cell parameters from 6804 reflections

$\theta = 2.6\text{--}27.5^\circ$

$\mu = 1.60\ \text{mm}^{-1}$

$T = 100\ \text{K}$

Prism, yellow

$0.30 \times 0.20 \times 0.10\ \text{mm}$

Data collection

Agilent SuperNova Dual

diffractometer with an Atlas detector

Radiation source: SuperNova (Mo) X-ray

Source

Mirror monochromator

Detector resolution: $10.4041\ \text{pixels mm}^{-1}$

ω scan

Absorption correction: multi-scan

(*CrysAlis PRO*; Agilent, 2012)

$T_{\min} = 0.645$, $T_{\max} = 0.856$

15316 measured reflections

5326 independent reflections

4445 reflections with $I > 2\sigma(I)$

$R_{\text{int}} = 0.033$

$\theta_{\max} = 27.6^\circ$, $\theta_{\min} = 2.6^\circ$

$h = -29 \rightarrow 40$

$k = -10 \rightarrow 10$

$l = -26 \rightarrow 16$

Refinement

Refinement on F^2

Least-squares matrix: full

$R[F^2 > 2\sigma(F^2)] = 0.028$

$wR(F^2) = 0.065$

$S = 1.02$

5326 reflections

293 parameters

3 restraints

Primary atom site location: structure-invariant

direct methods

Secondary atom site location: difference Fourier

map

Hydrogen site location: inferred from
neighbouring sites
H atoms treated by a mixture of independent
and constrained refinement

$$w = 1/[\sigma^2(F_o^2) + (0.0262P)^2 + 2.9883P]$$

where $P = (F_o^2 + 2F_c^2)/3$
 $(\Delta/\sigma)_{\max} = 0.001$
 $\Delta\rho_{\max} = 0.51 \text{ e } \text{Å}^{-3}$
 $\Delta\rho_{\min} = -0.44 \text{ e } \text{Å}^{-3}$

Fractional atomic coordinates and isotropic or equivalent isotropic displacement parameters (Å^2)

	<i>x</i>	<i>y</i>	<i>z</i>	$U_{\text{iso}}^*/U_{\text{eq}}$
Sn1	0.341644 (5)	0.660077 (19)	0.666671 (10)	0.01289 (6)
Cl1	0.37922 (2)	0.39689 (7)	0.68079 (4)	0.02026 (14)
Cl2	0.40850 (2)	0.82509 (7)	0.68449 (4)	0.02084 (15)
Cl3	0.31336 (2)	0.66098 (8)	0.53578 (4)	0.02510 (15)
Cl4	0.36197 (2)	0.66555 (8)	0.79760 (4)	0.02179 (15)
O1	0.27693 (5)	0.5575 (2)	0.65110 (10)	0.0169 (4)
O2	0.20485 (6)	0.6113 (2)	0.64027 (11)	0.0225 (4)
O3	0.07905 (6)	0.2706 (2)	0.53486 (11)	0.0217 (4)
O4	0.16051 (6)	0.3577 (2)	0.54923 (12)	0.0238 (4)
N1	0.29836 (7)	0.8782 (2)	0.66282 (12)	0.0144 (4)
N2	0.02661 (7)	0.1368 (3)	0.58997 (13)	0.0172 (5)
C1	0.24389 (8)	0.6557 (3)	0.64886 (14)	0.0153 (5)
C2	0.25594 (8)	0.8378 (3)	0.65863 (14)	0.0148 (5)
C3	0.22558 (9)	0.9549 (3)	0.66296 (15)	0.0191 (6)
H3A	0.1957	0.9238	0.6599	0.023*
C4	0.23938 (9)	1.1189 (3)	0.67188 (16)	0.0215 (6)
H4A	0.2192	1.2022	0.6753	0.026*
C5	0.28285 (10)	1.1601 (3)	0.67575 (18)	0.0253 (7)
H5	0.2928	1.2723	0.6813	0.030*
C6	0.31165 (9)	1.0370 (3)	0.67148 (16)	0.0209 (6)
H6	0.3418	1.0654	0.6748	0.025*
C7	0.02266 (9)	0.0482 (3)	0.64277 (15)	0.0200 (6)
H7	0.0501	0.0137	0.6846	0.024*
C8	-0.02144 (9)	0.0061 (3)	0.63690 (16)	0.0207 (6)
H8	-0.0246	-0.0580	0.6741	0.025*
C9	-0.06052 (9)	0.0593 (3)	0.57607 (16)	0.0192 (6)
H9	-0.0910	0.0315	0.5714	0.023*
C10	-0.05622 (9)	0.1538 (3)	0.52073 (15)	0.0173 (5)
C11	-0.09634 (9)	0.2137 (3)	0.45798 (16)	0.0214 (6)
H11	-0.1271	0.1894	0.4528	0.026*
C12	-0.09079 (9)	0.3046 (3)	0.40608 (16)	0.0228 (6)
H12	-0.1180	0.3440	0.3650	0.027*
C13	-0.04506 (9)	0.3436 (3)	0.41098 (15)	0.0191 (6)
C14	-0.04056 (9)	0.4373 (3)	0.35614 (16)	0.0236 (6)
H14	-0.0680	0.4748	0.3149	0.028*
C15	0.00334 (9)	0.4759 (3)	0.36123 (16)	0.0240 (6)
H15	0.0059	0.5400	0.3235	0.029*
C16	0.04405 (9)	0.4220 (3)	0.42113 (16)	0.0208 (6)
H16	0.0741	0.4495	0.4240	0.025*
C17	0.04076 (9)	0.3285 (3)	0.47630 (15)	0.0172 (5)
C18	-0.00405 (9)	0.2878 (3)	0.47287 (15)	0.0166 (5)

C19	-0.01061 (8)	0.1925 (3)	0.52815 (15)	0.0153 (5)
C20	0.18022 (11)	0.3508 (4)	0.49717 (18)	0.0330 (7)
H20A	0.1712	0.4503	0.4662	0.050*
H20B	0.1683	0.2525	0.4659	0.050*
H20C	0.2146	0.3448	0.5237	0.050*
H2	0.0542 (6)	0.171 (3)	0.5956 (17)	0.027 (8)*
H3	0.1041 (7)	0.306 (4)	0.5351 (19)	0.042 (10)*
H4	0.1730 (9)	0.434 (2)	0.5790 (13)	0.021 (8)*

Atomic displacement parameters (\AA^2)

	U^{11}	U^{22}	U^{33}	U^{12}	U^{13}	U^{23}
Sn1	0.01130 (9)	0.01287 (9)	0.01497 (11)	-0.00094 (7)	0.00613 (7)	-0.00093 (7)
Cl1	0.0175 (3)	0.0155 (3)	0.0278 (4)	0.0006 (3)	0.0098 (3)	-0.0006 (3)
Cl2	0.0182 (3)	0.0206 (3)	0.0289 (4)	-0.0060 (3)	0.0151 (3)	-0.0059 (3)
Cl3	0.0224 (3)	0.0360 (4)	0.0157 (4)	0.0055 (3)	0.0071 (3)	-0.0004 (3)
Cl4	0.0147 (3)	0.0370 (4)	0.0143 (3)	0.0024 (3)	0.0068 (3)	0.0010 (3)
O1	0.0114 (8)	0.0143 (8)	0.0242 (11)	-0.0025 (7)	0.0072 (8)	-0.0018 (7)
O2	0.0135 (9)	0.0271 (10)	0.0276 (12)	-0.0053 (8)	0.0096 (9)	-0.0072 (9)
O3	0.0120 (9)	0.0288 (10)	0.0226 (12)	-0.0037 (8)	0.0058 (8)	0.0051 (8)
O4	0.0198 (10)	0.0308 (11)	0.0220 (12)	-0.0108 (9)	0.0101 (9)	-0.0093 (9)
N1	0.0184 (10)	0.0129 (10)	0.0136 (12)	0.0004 (9)	0.0084 (9)	0.0013 (9)
N2	0.0138 (10)	0.0201 (11)	0.0179 (13)	-0.0030 (9)	0.0070 (10)	-0.0010 (9)
C1	0.0141 (12)	0.0193 (12)	0.0118 (14)	-0.0012 (10)	0.0050 (11)	-0.0017 (10)
C2	0.0147 (12)	0.0179 (12)	0.0106 (13)	-0.0003 (10)	0.0045 (11)	-0.0011 (10)
C3	0.0147 (12)	0.0247 (14)	0.0179 (15)	0.0033 (11)	0.0069 (11)	0.0009 (11)
C4	0.0242 (14)	0.0214 (13)	0.0218 (17)	0.0083 (12)	0.0128 (13)	0.0048 (12)
C5	0.0342 (16)	0.0137 (13)	0.0355 (19)	0.0010 (12)	0.0221 (15)	0.0026 (12)
C6	0.0221 (13)	0.0178 (12)	0.0293 (18)	-0.0016 (11)	0.0173 (13)	0.0020 (11)
C7	0.0200 (13)	0.0223 (13)	0.0164 (15)	-0.0016 (11)	0.0067 (12)	-0.0002 (11)
C8	0.0215 (13)	0.0229 (13)	0.0198 (16)	-0.0015 (12)	0.0110 (12)	0.0002 (12)
C9	0.0161 (12)	0.0232 (13)	0.0221 (16)	-0.0039 (11)	0.0118 (12)	-0.0057 (11)
C10	0.0161 (12)	0.0194 (13)	0.0168 (15)	-0.0009 (11)	0.0074 (11)	-0.0043 (11)
C11	0.0118 (12)	0.0288 (14)	0.0238 (17)	-0.0021 (11)	0.0079 (12)	-0.0063 (12)
C12	0.0153 (13)	0.0290 (14)	0.0182 (16)	0.0006 (11)	0.0017 (12)	0.0000 (12)
C13	0.0180 (13)	0.0210 (13)	0.0167 (15)	-0.0010 (11)	0.0062 (12)	-0.0013 (11)
C14	0.0186 (13)	0.0282 (15)	0.0191 (16)	0.0016 (12)	0.0036 (12)	0.0033 (12)
C15	0.0261 (14)	0.0266 (14)	0.0183 (16)	-0.0019 (12)	0.0087 (13)	0.0041 (12)
C16	0.0175 (13)	0.0250 (14)	0.0217 (17)	-0.0048 (11)	0.0101 (12)	-0.0027 (12)
C17	0.0152 (12)	0.0174 (12)	0.0163 (15)	-0.0022 (10)	0.0044 (11)	-0.0035 (11)
C18	0.0155 (12)	0.0159 (12)	0.0169 (15)	-0.0036 (10)	0.0056 (11)	-0.0038 (11)
C19	0.0134 (12)	0.0160 (12)	0.0150 (14)	-0.0023 (10)	0.0047 (11)	-0.0046 (10)
C20	0.0347 (17)	0.0435 (18)	0.0256 (19)	-0.0095 (14)	0.0175 (15)	-0.0087 (14)

Geometric parameters (\AA , $^\circ$)

Sn1—O1	2.0949 (15)	C7—C8	1.385 (3)
Sn1—N1	2.2092 (19)	C7—H7	0.9500
Sn1—Cl3	2.3828 (7)	C8—C9	1.374 (4)
Sn1—Cl2	2.3851 (6)	C8—H8	0.9500

Sn1—C11	2.3903 (6)	C9—C10	1.403 (4)
Sn1—C14	2.4231 (7)	C9—H9	0.9500
O1—C1	1.294 (3)	C10—C19	1.414 (3)
O2—C1	1.220 (3)	C10—C11	1.428 (4)
O3—C17	1.352 (3)	C11—C12	1.347 (4)
O3—H3	0.835 (10)	C11—H11	0.9500
O4—C20	1.431 (3)	C12—C13	1.436 (3)
O4—H4	0.831 (10)	C12—H12	0.9500
N1—C6	1.338 (3)	C13—C14	1.394 (4)
N1—C2	1.342 (3)	C13—C18	1.423 (4)
N2—C7	1.330 (3)	C14—C15	1.377 (3)
N2—C19	1.363 (3)	C14—H14	0.9500
N2—H2	0.870 (10)	C15—C16	1.394 (4)
C1—C2	1.511 (3)	C15—H15	0.9500
C2—C3	1.375 (3)	C16—C17	1.382 (4)
C3—C4	1.381 (4)	C16—H16	0.9500
C3—H3A	0.9500	C17—C18	1.422 (3)
C4—C5	1.378 (4)	C18—C19	1.438 (3)
C4—H4A	0.9500	C20—H20A	0.9800
C5—C6	1.373 (3)	C20—H20B	0.9800
C5—H5	0.9500	C20—H20C	0.9800
C6—H6	0.9500		
O1—Sn1—N1	76.37 (7)	C8—C7—H7	119.9
O1—Sn1—C13	87.87 (5)	C9—C8—C7	118.5 (2)
N1—Sn1—C13	91.69 (6)	C9—C8—H8	120.7
O1—Sn1—C12	169.28 (5)	C7—C8—H8	120.7
N1—Sn1—C12	92.91 (5)	C8—C9—C10	121.2 (2)
C13—Sn1—C12	92.68 (2)	C8—C9—H9	119.4
O1—Sn1—C11	93.77 (5)	C10—C9—H9	119.4
N1—Sn1—C11	168.64 (5)	C9—C10—C19	118.7 (2)
C13—Sn1—C11	93.58 (2)	C9—C10—C11	122.1 (2)
C12—Sn1—C11	96.88 (2)	C19—C10—C11	119.2 (2)
O1—Sn1—C14	87.18 (5)	C12—C11—C10	120.4 (2)
N1—Sn1—C14	83.78 (6)	C12—C11—H11	119.8
C13—Sn1—C14	173.96 (2)	C10—C11—H11	119.8
C12—Sn1—C14	91.54 (2)	C11—C12—C13	122.0 (3)
C11—Sn1—C14	90.20 (2)	C11—C12—H12	119.0
C1—O1—Sn1	118.61 (15)	C13—C12—H12	119.0
C17—O3—H3	112 (2)	C14—C13—C18	119.9 (2)
C20—O4—H4	109.5 (19)	C14—C13—C12	120.6 (2)
C6—N1—C2	119.2 (2)	C18—C13—C12	119.6 (2)
C6—N1—Sn1	127.39 (16)	C15—C14—C13	120.5 (3)
C2—N1—Sn1	113.00 (15)	C15—C14—H14	119.8
C7—N2—C19	124.3 (2)	C13—C14—H14	119.8
C7—N2—H2	120 (2)	C14—C15—C16	120.8 (3)
C19—N2—H2	115 (2)	C14—C15—H15	119.6
O2—C1—O1	124.9 (2)	C16—C15—H15	119.6
O2—C1—C2	119.1 (2)	C17—C16—C15	120.1 (2)

O1—C1—C2	116.1 (2)	C17—C16—H16	119.9
N1—C2—C3	122.0 (2)	C15—C16—H16	119.9
N1—C2—C1	115.6 (2)	O3—C17—C16	122.6 (2)
C3—C2—C1	122.4 (2)	O3—C17—C18	117.0 (2)
C2—C3—C4	118.7 (2)	C16—C17—C18	120.4 (2)
C2—C3—H3A	120.7	C17—C18—C13	118.4 (2)
C4—C3—H3A	120.7	C17—C18—C19	124.0 (2)
C5—C4—C3	119.2 (2)	C13—C18—C19	117.7 (2)
C5—C4—H4A	120.4	N2—C19—C10	117.1 (2)
C3—C4—H4A	120.4	N2—C19—C18	121.7 (2)
C6—C5—C4	119.3 (2)	C10—C19—C18	121.1 (2)
C6—C5—H5	120.4	O4—C20—H20A	109.5
C4—C5—H5	120.4	O4—C20—H20B	109.5
N1—C6—C5	121.6 (2)	H20A—C20—H20B	109.5
N1—C6—H6	119.2	O4—C20—H20C	109.5
C5—C6—H6	119.2	H20A—C20—H20C	109.5
N2—C7—C8	120.1 (3)	H20B—C20—H20C	109.5
N2—C7—H7	119.9		
N1—Sn1—O1—C1	-2.17 (18)	N2—C7—C8—C9	-0.6 (4)
Cl3—Sn1—O1—C1	-94.42 (18)	C7—C8—C9—C10	0.1 (4)
Cl2—Sn1—O1—C1	-1.2 (4)	C8—C9—C10—C19	0.7 (4)
Cl1—Sn1—O1—C1	172.13 (18)	C8—C9—C10—C11	-178.4 (2)
Cl4—Sn1—O1—C1	82.12 (18)	C9—C10—C11—C12	179.8 (2)
O1—Sn1—N1—C6	177.6 (2)	C19—C10—C11—C12	0.7 (4)
Cl3—Sn1—N1—C6	-95.0 (2)	C10—C11—C12—C13	0.5 (4)
Cl2—Sn1—N1—C6	-2.2 (2)	C11—C12—C13—C14	179.7 (3)
Cl1—Sn1—N1—C6	147.4 (2)	C11—C12—C13—C18	-1.1 (4)
Cl4—Sn1—N1—C6	89.0 (2)	C18—C13—C14—C15	0.2 (4)
O1—Sn1—N1—C2	4.76 (17)	C12—C13—C14—C15	179.4 (3)
Cl3—Sn1—N1—C2	92.16 (17)	C13—C14—C15—C16	0.1 (4)
Cl2—Sn1—N1—C2	-175.07 (17)	C14—C15—C16—C17	0.1 (4)
Cl1—Sn1—N1—C2	-25.5 (4)	C15—C16—C17—O3	178.8 (2)
Cl4—Sn1—N1—C2	-83.84 (17)	C15—C16—C17—C18	-0.6 (4)
Sn1—O1—C1—O2	-179.9 (2)	O3—C17—C18—C13	-178.5 (2)
Sn1—O1—C1—C2	-0.6 (3)	C16—C17—C18—C13	0.9 (4)
C6—N1—C2—C3	0.0 (4)	O3—C17—C18—C19	1.1 (4)
Sn1—N1—C2—C3	173.5 (2)	C16—C17—C18—C19	-179.4 (2)
C6—N1—C2—C1	180.0 (2)	C14—C13—C18—C17	-0.7 (4)
Sn1—N1—C2—C1	-6.5 (3)	C12—C13—C18—C17	-179.9 (2)
O2—C1—C2—N1	-175.7 (2)	C14—C13—C18—C19	179.6 (2)
O1—C1—C2—N1	4.9 (3)	C12—C13—C18—C19	0.4 (4)
O2—C1—C2—C3	4.3 (4)	C7—N2—C19—C10	0.5 (4)
O1—C1—C2—C3	-175.1 (3)	C7—N2—C19—C18	-179.9 (2)
N1—C2—C3—C4	0.0 (4)	C9—C10—C19—N2	-1.0 (3)
C1—C2—C3—C4	-180.0 (2)	C11—C10—C19—N2	178.1 (2)
C2—C3—C4—C5	0.4 (4)	C9—C10—C19—C18	179.5 (2)
C3—C4—C5—C6	-0.7 (4)	C11—C10—C19—C18	-1.4 (4)
C2—N1—C6—C5	-0.4 (4)	C17—C18—C19—N2	1.7 (4)

Sn1—N1—C6—C5	-172.9 (2)	C13—C18—C19—N2	-178.7 (2)
C4—C5—C6—N1	0.8 (5)	C17—C18—C19—C10	-178.8 (2)
C19—N2—C7—C8	0.3 (4)	C13—C18—C19—C10	0.8 (4)

Hydrogen-bond geometry (Å, °)

<i>D</i> —H... <i>A</i>	<i>D</i> —H	H... <i>A</i>	<i>D</i> ... <i>A</i>	<i>D</i> —H... <i>A</i>
O3—H3...O4	0.84 (1)	1.73 (1)	2.554 (2)	170 (3)
O4—H4...O2	0.83 (1)	1.87 (1)	2.698 (3)	174 (3)
N2—H2...Cl4 ⁱ	0.87 (1)	2.58 (2)	3.255 (2)	135 (2)

Symmetry code: (i) $-x+1/2, y-1/2, -z+3/2$.